

peopleCare | AR Goudie

# Goudie Gazette Community News



June  
2025 Edition

Our people will change the world of senior living.

## HE<sup>♥</sup>RTbeats

Congratulations to our Monthly Draw winners!

**Gurjot (PSW)**



**Sukhdeep (PSW)**

They have received a \$25 gift card for displaying peopleCare Values!  
Thank you for all that you do!

## In Loving Memory



*Reg K.  
June P.  
Jean Z.*

**Our deepest thoughts & sympathies  
go out to the family & friends.**

## Hairdresser



Looking to get in touch with our hairdresser  
Louise? POA's can email  
[louisepeoplecare@gmail.com](mailto:louisepeoplecare@gmail.com)

## Resident Council



The next Resident Council meeting will be held on Tuesday June 17<sup>th</sup> in the 2nd floor lounge. All residents are welcome!

*≡ Welcome ≡*

Patricia B.  
Mia H.  
Don P.

Living the peopleCare Values

## Growth

We embrace change and maximize every opportunity for our people and our organization.



**Our people will change the world of senior living.**



## Special Events

**Holy Cross Lutheran Church Choir**

June 1<sup>st</sup> @2:00pm

**Campfire Songs & Skits with  
Boy Scouts**

June 5<sup>th</sup> @2:00pm

**Summer Wreath Making with Creekside  
Church Volunteers (Sign up)**

June 6<sup>th</sup> @2:00pm

**Pride Party with Joel Morelli**

June 9<sup>th</sup> @2:00pm

**Pizza Diners Club (\$Sign Up)**

June 10<sup>th</sup> @12:30pm

**Prom Night with Sheryl Walsh**

June 13<sup>th</sup> @6:15pm

**Fathers Day Celebration with  
Jay Franco**

June 15<sup>th</sup> @2:00pm

**St. Theresa's School Choir Performance**

June 17<sup>th</sup> @1:30pm

**Seniors Month Speciality Prize Bingo**

June 18<sup>th</sup> @2:00pm

**Ice Cream Sundae Social**

May 20<sup>th</sup> @2:00pm

**June Birthday Party with Micheal Kelly**

June 27<sup>th</sup> @2:00pm

### Joke of the Month

What do you call a  
flower that runs on  
electricity?

*A power plant!*



### Happy Birthday

Elsa H- June 7<sup>th</sup>

Louise S- June 11<sup>th</sup>

Don P- June 15<sup>th</sup>

Irma K- June 16<sup>th</sup>

Maggie C- June 25<sup>th</sup>

Sally D- June 26<sup>th</sup>

Rene K- June 26<sup>th</sup>

Bruce S- June 27<sup>th</sup>



## From the Desk of Florin

Happy June Everyone!

After a quite chilly and humid month of May, we can now enjoy some nicer sunny and warmer days. Nature is giving us the most beautiful flowers with vibrant colours and many of them with subtle pleasant aromas to our delight. The first day of summer arrives with the solstice this year on June 20<sup>th</sup>. For those of us in the Northern Hemisphere, the Earth tilts mostly toward the Sun during this time.

As the weather is getting warmer, its time to revisit the closets and remove the cold weather clothing, making room for light clothing. When you are bringing in new clothing, please place them in the collection box located by the elevators for proper labeling. We encourage to purchase wash and wear clothing. Valuables, jewellery, and large sums of money are best kept with the responsible party.

Please do not keep more than few dollars at the bedside. We encourage our residents to utilize the trust account available to all residents at no cost at the home, where funds can be kept for day-to-day requirements. We are happy to assist with this.

Please be advised that the accommodation rates will increase as of July 1st, 2025. A bulletin with detailed information has been provided with the current monthly statements. Please contact our office manager Gisele Kague 519 744 5182 ext. 224, if you have any questions.

In the month of May we celebrated the caregiver's week. Thank you to all caregivers that are taking care of our residents, thank you for all your dedication and professionalism.

## From the Desk of Florin Continued

On Friday May 23, 2025, The Honourable MPP Dawn Gallagher Murphy paid a visit to our home as part of her first official tour of Long-Term Care Homes as the Parliamentary Assistant to the Minister of Long-Term Care. During her visit she visited both sides of the building, getting in touch with residents and team members, observing the nicely renovated rooms and hallways decorated with sensory scapes, and the progress for the new build. She learned about the expansion plans and saw first-hand the commitment of staff to delivering High-Quality care in a supportive environment.

Special events were held to celebrate Mother's Day and this month we are celebrating the Senior's Month with many specific activities, Father's Day and Pride Month.

Please join us welcoming our new team members: Ravinderjit S, Samara MC, Ashok KG, Navjot K, and Patience J. Through our collaboration with colleges, you will see many students in the home practicing their skills. Please welcome them as they will be our next team members providing services to our residents.

We are pleased to announce the 2025 Value Awards winners for our home: Professionalism – Keshav S, Excellence – Tayler B, Gladys D and Chris H, and for Integrity – Kelly F. Congratulations!

Construction Updates – The work for the new build is getting closer to be finalized early in June. Landscaping has been installed, new concrete entrance access and asphalt was laid down, a new canopy has been installed at the front. During this month we will furnish the new building getting ready for licencing and planning to admit new residents by the end of July.

Enjoy the summer!

Florin Perte, Executive Director



# Bulletin to Residents of Long-Term Care Homes: Important News Regarding Long-Term Care Home Accommodations Charges

Ministry of  
Long-Term Care

SPRING 2025  
Renseignements aussi  
disponibles en français

**Basic Accommodation Rates** On July 1, 2025, the maximum co-payment that residents pay for basic accommodation in Long-Term Care (LTC) homes **will increase by \$1.61 per day from \$66.95 per day to \$68.56 per day**, consistent with recent inflationary increases. This will help cover the rising costs of meals and accommodation.

## Preferred Accommodation Rates

The maximum charges will also be increasing for residents in preferred accommodation beds as of July 1, 2025. The premium charged for a newer bed in semi-private accommodation will increase by \$0.33 from \$13.77 to \$14.10 per day, and the premium for a newer bed in private accommodation will increase by \$0.69 from \$28.70 to \$29.39 per day.

The table below provides the new rates that will apply as of July 1, 2025 to all types of accommodation based on a resident's date of admission to the bed.

Type of Accommodation	Daily Rate	Monthly
<b>Long-Stay Resident:</b>		
<b>Basic</b>	\$68.56	\$2,085.37
<b>Semi-Private</b>		
Residents admitted to newer beds on or after July 1, 2015.	\$82.66	\$2,514.24
Residents admitted to newer beds on or after September 1, 2014, but prior to July 1, 2015.	\$81.48	\$2,478.35
Residents admitted to newer beds on or after July 1, 2013, but prior to September 1, 2014.	\$80.31	\$2,442.77
Residents admitted to newer beds on or after July 1, 2012, but prior to July 1, 2013.	\$79.11	\$2,406.27
Residents occupying older beds, or residents admitted to newer beds prior to July 1, 2012.	\$77.97	\$2,371.59
		<i>Continued...</i>

---

**Private**

Residents admitted to newer beds on or after July 1, 2015.	\$97.95	\$2,979.32
Residents admitted to newer beds on or after September 1, 2014, but prior to July 1, 2015.	\$95.89	\$2,916.66
Residents admitted to newer beds on or after July 1, 2013, but prior to September 1, 2014.	\$93.82	\$2,853.69
Residents admitted to newer beds on or after July 1, 2012, but prior to July 1, 2013.	\$91.77	\$2,791.34
Residents occupying older beds, or residents admitted to newer beds prior to July 1, 2012.	\$89.70	\$2,728.38

---

**Short-Stay Resident (Respite Bed)**

---

**\$44.38**

---

**N/A**

---

**NOTE:** “Newer beds” – beds classified as “NEW” or “A” according to ministry design standards  
“Older beds” – beds classified as “B”, “C”, “Upgraded D” or “D” according to ministry design standards

Effective from July 1, 2025, the basic accommodation rate is determined using the following formula:

- July 2024 rate x (1 + CPI Rate up to a maximum of 2.5%) = 2025 co-payment rate.  
[ i.e., \$66.95 x (1+2.4%) = \$68.56]
- The monthly rate is determined by multiplying the daily rate by 30.4167.  
[ i.e., \$68.56 x 30.4167 = \$2,085.37]

If you have requested a transfer from your current accommodation into a preferred accommodation bed, please call the LTC home administrator to confirm the rate that you will be required to pay. Preferred rates for semi-private and private accommodation in your current LTC home or in another LTC home may be different if you are offered a bed on or after July 1, 2025.

**If you are currently paying less** than \$66.95 per day because you are receiving a reduction in the basic co-payment, known as a “Rate Reduction,” then you should reapply for a rate reduction as the current rate reduction term ends on June 30, 2025. All residents receiving a rate reduction should re-apply for a reduction in the basic co-payment rate for the 2025-26 cycle, beginning on July 1, 2025. Staff at your LTC home will provide you with the application form and will help you to submit your application to the Ministry of Long-Term Care.

For more information on co-payment rates or the changes to the rate reduction application process, please speak with your home’s Administrator. Should you have any additional questions, please contact: [LTC.RateReduction@ontario.ca](mailto:LTC.RateReduction@ontario.ca).



369 Frederick St, Kitchener | 519-519-744-5182

# Visit from MPP Dawn Gallagher Murphy !



**New Canopy!**





369 Frederick St, Kitchener | 519-519-744-5182

# AR Goudie's Value Award Winners!





# Rock Painting!





# Cinco De Mayo!





369 Frederick St, Kitchener | 519-519-744-5182

# Humane Society Visit!





369 Frederick St, Kitchener | 519-519-744-5182







## "Our Street" Lighthearted Short Stories

By: Volunteer "Maggie B"

When Dad entered the room, he spotted his wife hovering over Billy who was completely absorbed in a book, but not just any book, it was the Bible!

"Whatcha doing Billy?" he asked wondering about his son's unusual interest.

"Oh," Billy replied. "Father O'Brien gave everyone in the confirmation class homework. Bobby is to study the disciples. Mary must report on women in the Bible, and I have to learn everything I can about angels."

"Ok," Dad nodded, "that explains things. I'll leave you to it. I'm going to the hardware store. We need a cartridge for the basement water spigot. I'll install it when I get back." And with a wave he was off.

Billy studied the worry lines spreading across his mother's forehead. That morning, a routine washing machine tune-up had become potentially expensive. A leak in the water shutoff faucet had been discovered. Billy and his mom both recognized this as a bad omen. Dad didn't have the best track record when it came to home repairs:

Replacing the toilet's flush lever, had gone without incident, that was until he'd given the wrench a final crank. The porcelain had cracked from tank lid to bowl - \$200 for a new toilet!

Painting the family room had gone well enough, that was until the final ladder move. Stepping off the bottom rung he had tripped knocking the paint can over - \$300 for a new rug.

Replacing the knobs on the kitchen cupboards had seemed a simple task, that was until, as Dad explained it, "A screw slipped from my grip, bounced on the counter, jumped into the sink and dove down the drain to avoid capture." - \$40 for a new trap!

Now, at the Hardware store, armed with a picture of the faulty part, he walked up and down the aisles searching the plumbing section. On his third trip past the tap assembly counter, he began to compare his photo with the parts hanging from a peg board. He was reaching for a particular item when he was startled by a cheerful voice, "I see you are looking for the same part as me." Indicating the package Dad had just pulled off a peg, the man added, "The one you've chosen won't work with the assembly in your picture. The shaft is too long. This is what you need." He pulled a package from the display and handed it over. Dad studied the package and turned to thank the stranger, but the man was gone.

Once home he recounted his experience in the hardware store. Then he set about installing the new part. In due time the water was turned on, and worked perfectly. Proud of himself, Dad returned upstairs, and noticed Billy was still emersed in his studies. He asked, "So what have you learned about angels today?"

Billy sipping from a fresh glass of water replied, "That not all angels have wings."

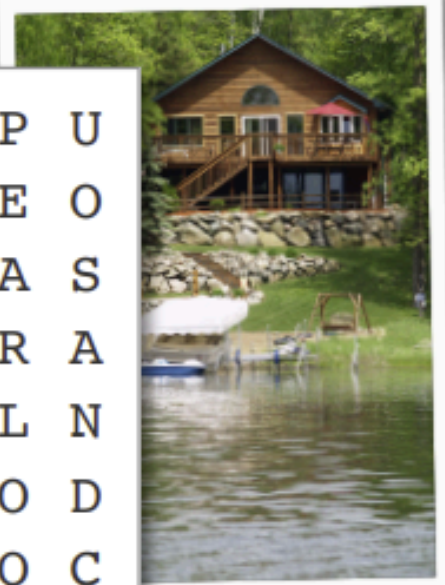
Mom, looking much relieved, nodded in agreement.



# Searching for June

The words listed below can be found vertically, horizontally, diagonally, forward, and backward. Disregard spaces between words.

C	A	N	C	E	R	Y	A	T	J	T	S	U	P	U
X	L	K	K	R	O	Z	A	U	U	E	W	A	E	O
C	O	T	T	A	G	E	N	D	I	O	M	Q	A	S
V	X	R	Q	B	R	E	C	L	G	O	K	S	R	A
G	C	F	R	U	T	D	F	L	L	A	R	O	L	N
F	E	E	Q	E	O	E	P	P	S	C	L	I	O	D
B	A	M	E	J	R	L	I	E	H	T	C	F	Q	C
K	H	N	I	I	E	D	S	N	A	J	D	B	B	A
D	T	P	F	N	C	A	L	R	V	E	L	G	A	S
H	W	E	D	D	I	N	G	S	U	J	I	P	C	T
Z	P	M	V	Y	T	I	F	M	O	W	U	Y	R	L
Z	D	Y	A	D	S	R	E	H	T	A	F	O	R	E
M	L	R	Y	K	L	X	L	I	O	H	S	T	Y	S
Y	N	N	U	S	O	A	F	E	G	E	J	Y	W	V
A	Y	S	U	U	S	W	N	O	I	T	A	C	A	V



BREAK  
CANCER  
COOKOUT  
COTTAGE  
DIPLOMA  
FATHER'S DAY

FIREFLIES  
FLAG DAY  
GEMINI  
JUNETEENTH  
PEARL  
ROSE

SANDCASTLES  
SHAVUOT  
SOLSTICE  
SUNNY  
VACATION  
WEDDINGS

## Administration

Looking for help? Call or email the appropriate member of AR Goudies Administration team.

Florin Perte - Executive Director  
fperte@peoplecare.ca ext. 202

Anabela Henriques - Director of Care  
ahenriques@peoplecare.ca ext. 220

Marilyn Seabrook - Asst. Dir. of Care  
mseabrook@peoplecare.ca ext. 203

Wendy Williams - Dir. of Resident  
Quality Outcomes  
wwilliams@peoplecare.ca ext. 241

Gisele Kague - Office Manager  
gkague@peoplecare.ca ext. 224

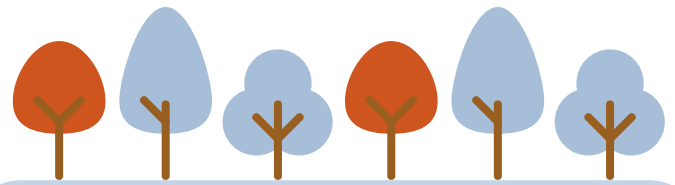
Emma Schmolling - Nursing  
Staffing Manager  
eschmolling@peoplecare.ca ext. 201

Sandra Mohammed- Dir. of Food Services  
smohammed@peoplecare.ca ext. 208

Rosie Martin - Dir. of Programs  
rsmaritm@peoplecare.ca ext. 222

Moe Eltorky- Dir. of Environmental  
meltorky@peoplecare.ca ext. 328

For other service providers like dietician or social work,  
please contact the appropriate manager.



### peopleCare is here for you!

peopleCare recognizes that we cannot thrive without the hard work and dedication our employees make every day in all our Homes. Please remember all of the programs that peopleCare has to assist you in your personal lives, educational pursuits and employee recognition! If you are unfamiliar with any of the following, please speak to your manager:

- Employee Assistance Program
- Education Assistance Program
- HEARTbeats Rewards & Recognition Program
- Disaster Relief Fund

**Follow us on Instagram**  
@peoplecare.communities



Find us on  
**Facebook**  
<https://www.facebook.com/PeopleCareCommunities/>

**peopleCare**  
communities



**Our people will change the world of senior living.**