

COMMUNITY PARTNER *update*

peopleCare
communities

Jan-Mar 2024

peopleCare is on track for one of our most exciting years ever. We're leading tech-driven care models that will result in better, faster LTC admissions, improving efficiency and satisfaction for residents and staff. We're rolling out a collaborative approach to supporting our families as care partners. Not to mention we have three LTC Homes in construction — and with the outstanding support of the government, and great partnerships in place, we're ready to hit the ground running on many others!

Championing Sustainable Development

The peopleCare team was excited to welcome the Minister of Long-Term Care Stan Cho to [tour](#) our fast-progressing 128-bed Tavistock LTC redevelopment. Some of the day's focus was on showcasing how we're championing sustainable development and wellbeing by teaming up with [DER Solutions](#). Their energy efficient, innovative BluTree air climate systems will improve the indoor air quality for residents and staff in our new LTC Homes.

Huge thank you to the Minister and all our local MPPs for the outstanding support for LTC in the 2024 Ontario budget. We appreciate our government partners for engaging with us and working to meet the sector's needs, even in a time of constraint. These investments will enable peopleCare to continue enhancing care experiences for the people we serve, with highly skilled and caring staff. With the new capital funding we also look forward to accelerating much-needed LTC developments in communities like Tillsonburg, Stratford and Peterborough (on the [Trent University](#) campus).



Minister of Long-Term Care Stan Cho joins peopleCare team and partners from DER Solutions and Vandel Construction on a tour of the new 128-bed peopleCare Tavistock LTC Home, set to open later this year.

Read the latest on all [peopleCare's Developments](#).



peopleCare AR Goudie LTC 128-bed expansion.

Speaking of bringing new LTC beds into communities quickly, take a look at the quick work we're making of our developments in [Tavistock](#) (opening 2024), [Kitchener](#) and [Delhi](#) (both opening 2025).

Shout-out to our partners at Vandel construction and SRM architects, not to mention our municipal partners who are committed to helping us to complete planning approvals in record time.



BEST
MANAGED
COMPANIES

www.peoplecare.ca

Community Partner Update page 1 of 2

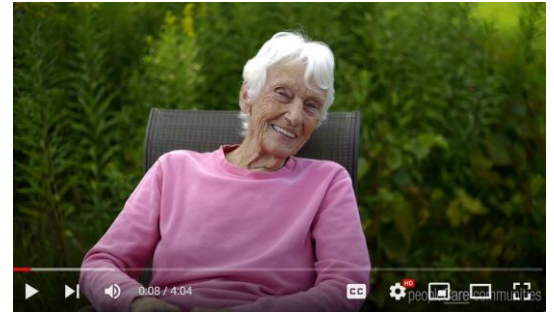
Let's get social



NEW resident video!

For over a decade, once a year [peopleCare](#) residents and staff from across our Homes enjoy quality time together at the beautiful Hidden Acres retreat. Residents choose how they want to spend their days, reconnect with nature and delight in leisure pastimes like fishing, nature walks, campfires, movies, reading, painting, card games and more. The unique experience also puts the emphasis on the relationships between people (vs staff and resident). “Enjoying the time together in this way, it feels more like we’re a family,” is how one team member describes it.

Creating these kinds of life-enriching experiences for residents and staff to share is at the heart of peopleCare’s mission and one more way we’re changing the world of senior living. Watch our latest Annual [Residents Retreat video](#) on YouTube.



Improving LTC Admissions

At the recent [PointClickCare Summit](#), the peopleCare team [shared insights](#) into how we are transforming LTC admissions through our collaborative new ENRICHED model. Tech-enabled, it optimizes innovations that better integrate hospital and LTC transitions with solutions like mobile ePrescribing and peopleCare’s award-winning clinical pharmacy model, with its 24/7 telepharmacy and automated dispensing cabinets. It also maximizes new clinical assessment tools and best practices. Fully implemented, our ENRICHED model will lead to faster access to collaborative, integrated care planning and improved resident, family and staff experiences. We’ll also work with Trent University to research outcomes. Thank you to our partners [RNAO](#), [PointClickCare](#), [CareRx](#), [London Health Sciences](#) and [THINK Breakthrough](#).



Watch for us at the upcoming [Together We Care Conference in Toronto](#) next month, where we will focus on other aspects of our holistic model including Resident and Family Centre Care Assessments. [Improving Resident, Family, and Staff Experience on Admission](#) (April 10, 1:00 PM).

Supporting Families Topic of New Podcast

If you’re looking for a way to bolster your Family Council, create a space where families can connect in a unique way with staff and other families, and build relationships as partners in care, you’ll want to listen to this episode of the Empathy Exchange podcast. Host [Deb Bakti](#) interviews peopleCare Director of Programs [Kristen Leal](#) and family member Anita, about their experiences with peopleCare’s collaborative approach to emotional support for families. From Kristen’s book club with Family Council members, to the heartwarming poem Anita wrote for staff called “I See You”, this episode captures the essence of peopleCare’s commitment to building strong relationships between staff and families. Watch [Embracing Families and their Stories: A Collaborative Approach](#)

THE EMPATHY EXCHANGE: EMPOWERING STAFF AND FAMILIES IN SENIORS' CARE • EPISODE 9

Embracing Families and their Stories: A Collaborative Approach to Emo...

00:00 | 40:41

SUBSCRIBE SHARE MORE INFO

Transistor

We're back on [Instagram](#) with all new content and a fresh take on why it’s a blast to live and work in a peopleCare Home! Go give us a follow so you don't miss any of the fun and #HeartfeltMoments!



BEST MANAGED COMPANIES

www.peoplecare.ca

Community Partner Update page 2 of 2

Let's get social

