

April 2024

# Oakcrossing News

peopleCare Oakcrossing LTC | 1242 Oakcrossing Rd | 519-641-0021 | www.peoplecare.ca



## Celebrating April

### Lawn and Garden Month

**April Fools**

*April 1<sup>st</sup>*

**Easter Monday**

*April 1<sup>st</sup>*

**World Autism Day**

*April 2<sup>nd</sup>*

**National Walking Day**

*April 3<sup>rd</sup>*

**The Night of Power**

*April 5<sup>th</sup>*

**Green Shirt Day**

*April 7<sup>th</sup>*

**World Parkinson's Day**

*April 11<sup>th</sup>*

**National Gardening Day**

*April 14<sup>th</sup>*

**McDonalds Anniversary**

*April 15<sup>th</sup>*

**National Volunteer Week**

*April 21–27*

**Earth Day**

*April 22*

**International Jazz Day**

*April 30*

**FOLLOW US**



@ peopleCare Communities

Why shouldn't  
you tell ducks  
jokes on April  
Fools' Day?

They'll quack up.



**I lost all my  
winter weight.**

Now I just have  
spring rolls.





# Contacts



**Deborah Sims**, Executive Director  
Ext 103 [dsims@peoplecare.ca](mailto:dsims@peoplecare.ca)

**Tori Livingston**, Director of Care  
Ext 109 [vlivingston@peoplecare.ca](mailto:vlivingston@peoplecare.ca)

**Anu Kurian**, Assistant Director of Care  
Ext 307 [akurian@peoplecare.ca](mailto:akurian@peoplecare.ca)

**Lincy Thomas**, Assistant Director of Care  
Ext 207 [lthomas@peoplecare.ca](mailto:lthomas@peoplecare.ca)

**Michelle Milmine**, Office Manager  
Ext 102 [mmilmine@peoplecare.ca](mailto:mmilmine@peoplecare.ca)

**Deb Howe**, Nursing Staffing Manager  
Ext 108 [oakcrossingltcstaffing@peoplecare.ca](mailto:oakcrossingltcstaffing@peoplecare.ca)

**Emily Haskett**, Director of Programs  
Ext 306 [ehaskett@peoplecare.ca](mailto:ehaskett@peoplecare.ca)

**Angella Bennett**, Director of Quality Outcome  
Ext 308 [abennette@peoplecare.ca](mailto:abennette@peoplecare.ca)

**Aman Kaur**, Director of Quality Outcome  
Ext 308 [akaur@peoplecare.ca](mailto:akaur@peoplecare.ca)

**Sara Temraz**, Director of Support Services  
Ext 112 [nmoakcrossing@nutraservices.ca](mailto:nmoakcrossing@nutraservices.ca)

**Ansley Desmarais**, Food Service Supervisor  
Ext 111 [fssoakcrossing@nutraservices.ca](mailto:fssoakcrossing@nutraservices.ca)

**Sabah**, Maintenance Manager  
Ext 120 [msoakcrossing@nutraservices.ca](mailto:msoakcrossing@nutraservices.ca)

**Erika & Liesje**, BSO  
Ext 206 [egranger@peoplecare.ca](mailto:egranger@peoplecare.ca)  
[lconfurius@peoplecare.ca](mailto:lconfurius@peoplecare.ca)

**Vipin Samuel**, Social Worker  
Ext 208 [vipinsamuelsrw@gmail.com](mailto:vipinsamuelsrw@gmail.com)

## Director of Programs Message:

Hello everyone,  
Looking back at March, we had a busy and successful month in the recreation world. We made it through many various outbreaks, had some amazing musical church services, some creative spring crafts, lots of fun socials and much more!

We had a very memorable St Patrick's event on March 16<sup>th</sup>. Irish School of Dance came to Oakcrossing LTC to dance. It was a huge success, and many residents, staff and family members are still talking about it. Looking forward to seeing what April has in store for us!

- Emily Haskett (DOP)  
[ehaskett@peoplecare.ca](mailto:ehaskett@peoplecare.ca)





### Upcoming Council Meetings

Next **residents' council** meeting is April 9<sup>th</sup> @ 10:45am in the back lounge of Norway Spruce.

Next **family council meeting** is Wednesday May 15<sup>th</sup> @ 7:00pm via zoom. Zoom link will be sent the week of.

### April Jokes

1. What kind of shoes do frogs wear when spring comes?
2. Why don't eggs play April Fools' pranks?
3. How do you plant a kiss in April?
4. Why shouldn't you tell duck jokes on April Fools' Day?
5. What do bees use to fix their hair?

# ROCK AND ROLL TATTOO SOCIAL



**COME ROCK OUT WITH US AND GET YOUR HANDS ON SOME FUNKY TEMPORARY TATTOOS!**

.....  
**WHEN: FRIDAY APRIL 12TH AT 2:00**  
**WHERE: IN THE CAFE**

## Welcome to Oakcrossing

- Brigitte Greenslade** – White Pine
- William Gohm** – Sugar Maple
- Marion Gaukrodger** – Red Oak
- Joan Hudson** – Juniper
- Harry Quigley** – Norway Spruce
- Roberta Sweet** – Sugar Maple

*We look forward to getting to know you.*



## Happy Retirement Lori & Welcome to Oakcrossing Loveth



**Left:** New Physiotherapist, Loveth. **Right:** Lori

## Greetings from the Executive Director,

The first day of spring brought us cold weather!! I was looking out my window and noticed the daffodils coming up in hopes to see the beautiful yellow blooms. Hopefully they will come when the weather changes to a little warmer again. I think we were spoiled by those a few days of warmth.

We have been busy with the air conditioning installation and getting ready to launch the Butterfly model. We have had guests in the home to give us samples of a door covering and a small area of the wallpaper on Juniper. Can not wait to see when we get the rest of the doors done on the unit. Small changes make such a difference in our home areas.

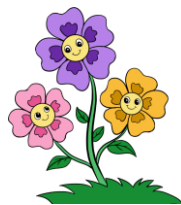
As an organization we are working on our Strategic planning for the next 3 years, working on our mission vision values statement. Can't wait to share once it is completed.

We will be enhancing education for our registered staff and leaders this year to support Leadership skills. Some staff have been participating in GPA training. We have hopes to have some opportunities for some more sessions to support our delivery of care to you and your loved ones.

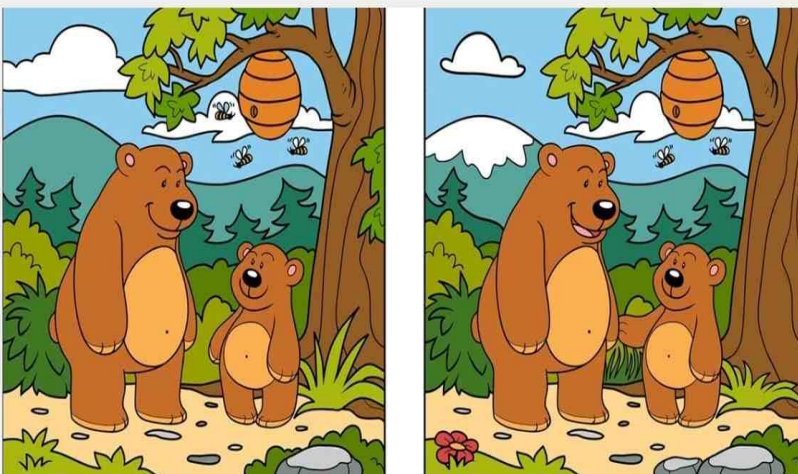
If you have any questions feel free to reach out.

**Deb Sims**  
Executive Director

[dsims@peoplecare.ca](mailto:dsims@peoplecare.ca)



### Spot 12 Differences in 35 Seconds



**MCDONALDS**  
**Happy Meal Lunch**  
**@ OAKCROSSING**

**When: April 15th at noon**

Please sign up with recreation before April 8th. Spots are limited!

# April Joke Answers.

1. Open – toad.
2. They might crack each other up.
3. You use two lips.
4. They'll quack up.
5. Honeycombs.



## Spring Word Search



N	Q	F	I	P	F	S	D	R	I	B	L	S	B	F	Z	R
J	V	P	X	X	O	X	S	B	G	P	I	S	R	E	P	S
T	D	X	M	R	A	W	S	N	P	T	R	R	F	S	Q	E
N	M	Z	B	G	T	E	A	E	O	Z	P	E	N	J	M	O
Y	D	B	M	P	G	A	R	N	I	X	A	W	A	J	E	U
G	S	Y	C	T	X	S	G	I	U	R	V	O	T	N	V	V
G	I	S	N	Q	E	T	X	H	V	U	L	H	Q	X	Q	C
E	V	P	F	J	V	E	K	S	Y	U	S	S	Z	B	Y	L
V	D	T	L	C	P	R	E	N	A	P	R	E	E	Q	M	I
K	D	W	O	R	Y	D	R	U	M	B	R	E	L	L	A	W
M	R	G	W	D	Z	B	A	S	E	B	A	L	L	L	R	Q
R	R	T	E	Q	W	Q	Y	V	T	J	D	L	A	H	C	E
M	B	H	R	M	W	D	Q	T	W	W	Q	R	Q	X	H	U
M	F	M	S	E	R	J	F	N	O	T	T	A	G	S	H	E
N	G	N	I	R	P	S	X	X	B	G	A	I	S	I	V	W
E	R	H	I	I	I	L	M	G	R	E	E	N	Y	L	T	R
Y	R	W	D	M	L	G	Q	T	T	I	A	O	A	F	F	B

SPRING  
MAY  
GREEN  
WARM  
UMBRELLA



MARCH  
FLOWERS  
GRASS  
SHOWERS  
EASTER



APRIL  
BASEBALL  
SUNSHINE  
RAIN  
BIRDS





## April Birthdays

Resident	Birthday
Farangis R	April 1
Penny S	April 3
Jim H	April 4
Andrea P	April 9
Viera M	April 11
Molly S	April 14
Carl M	April 15
David C	April 17
Millie M	April 22
Joan A	April 22
Charlie F	April 27
Roberta S	April 28
Margaret C	April 29
Karen W	April 29



## April Famous Birthdays

If you were born between April 1–19, you are Aries, the Ram. These independent adventurers like to strike out on their own and are natural leaders. Their enthusiasm and confidence give them big, outgoing personalities. Those born between April 20–30 are Bulls of Taurus. Bulls show a steady persistence in endeavors both professional and personal, and after working hard, they like to reward themselves for a job well done.

Emmylou Harris (musician) – April 2, 1947  
 Marlon Brando (actor) – April 3, 1924  
 James D. Watson (scientist) – April 6, 1928  
 Jackie Chan (actor) – April 7, 1954  
 Beverly Cleary (author) – April 12, 1916  
 Queen Elizabeth II (royalty) – April 21, 1926  
 Barbra Streisand (entertainer) – April 24, 1942  
 Kelly Clarkson (singer) – April 24, 1982  
 Jay Leno (comedian) – April 28, 1950  
 Duke Ellington (pianist) – April 29, 1899



*In Memory Of*  
 Mary Mullins, Valerie  
 Nettleton, Dallard Keam,  
 Donald Orr & Tiny Van  
 Boxmeer

*Our deepest thoughts and sympathies go  
 out to the family and friends.*

"He spoke well who said that graves are the  
 footprints of angels.

~Henry Wadsworth Longfellow

# DISCO SOCIAL



**GET YOUR  
 GROOVE ON  
 WITH US AT  
 OUR DISCO  
 HAPPY HOUR  
 - IT'S TIME  
 TO BOOGIE!**

**WHEN: APRIL 9TH  
 AT 2:00  
 WHERE: IN THE  
 CAFE**

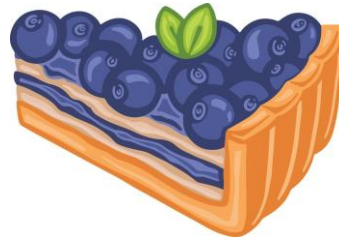
Hello everyone,

We will be celebrating National food days during the month of April! On March 26<sup>th</sup> we will be serving Mini Pretzels and on March 28<sup>th</sup> delicious Blueberry Pie. Happy National Pretzel and Blueberry Pie Day!

**Ansley Desmarais**

Assistant Director of Food Service

[fssoakcrossing@nutraservices.ca](mailto:fssoakcrossing@nutraservices.ca)



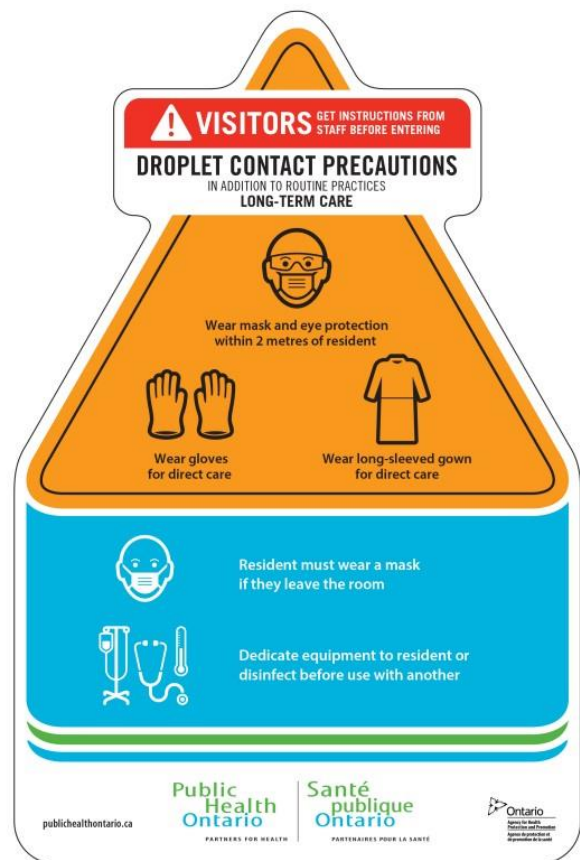
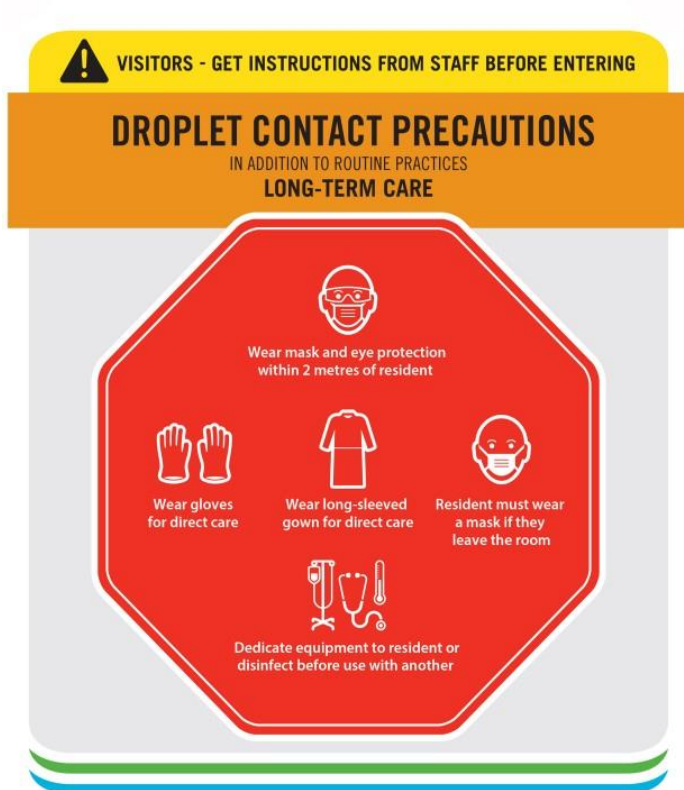
# Breakfast Food Word Scramble

1. eabrd \_\_\_\_\_  
2. uifmfn \_\_\_\_\_  
3. wlffsea \_\_\_\_\_  
4. ilkm \_\_\_\_\_  
5. amj \_\_\_\_\_  
6. sgge \_\_\_\_\_  
7. ttsao \_\_\_\_\_  
8. eargon cueij \_\_\_\_\_  
9. ceearl \_\_\_\_\_  
10. bcona \_\_\_\_\_  
11. gasesua \_\_\_\_\_  
12. scheee \_\_\_\_\_  
13. utyrog \_\_\_\_\_  
14. capaesnk \_\_\_\_\_  
15. eutrtb \_\_\_\_\_  
16. ticoasnr \_\_\_\_\_

# IPAC CORNER

You may have seen signs that pop up on resident room doors in our home. These signs show how visitors, staff, and residents can remain safe by stopping the transmission of communicable diseases like Influenza, COVID-19, RSV, and other viruses and bacteria that can make us sick. It is important to follow the instructions on these signs, and if you are ever unsure, ask one of our staff members. They will be happy to help you to remain safe. Below are signs you might see in our home. It is referred to as Droplet Contact. These signs are in place on resident room doors when there is the possibility of 'catching' something that could make us ill while in the room. In this case, the illness is transferred by tiny germs that float in the air. They can also live for hours on hard and soft surfaces in the room. These germs come from coughing, sneezing, and nasal secretions, but can also come from simply breathing. These signs show us how to remain safe by using the personal protective equipment that we need to enter the room.

<https://www.publichealthontario.ca>





## The Difference

I sit and watch the world go by,  
A world of varying people,  
Seldom are there two alike  
For everybody is different.

Their needs and wants are not alike,  
Their dress, it does differ.  
Beneath it all there is a need  
For all the live and love.

So maybe we're not so different,  
Maybe we are all alike.  
For the need to love is in us all  
Whether old or very young.

Our looks and dress is different  
But our feeling are the same.  
The needs, the wants, the urges  
Mean we vary not at all.

Bob M  
Sugar Maple

